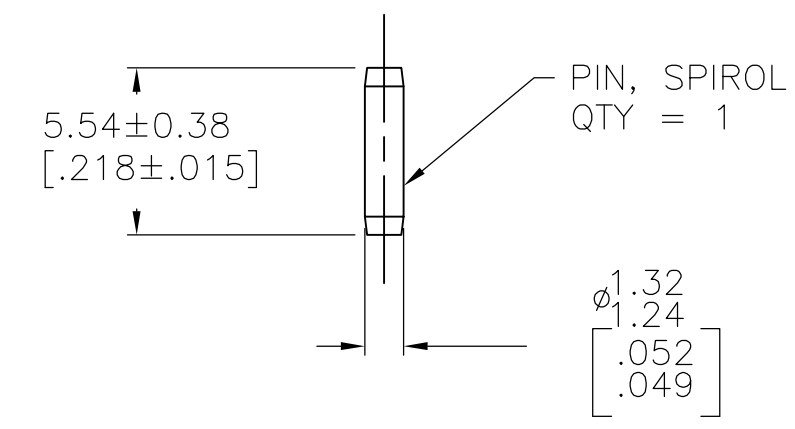
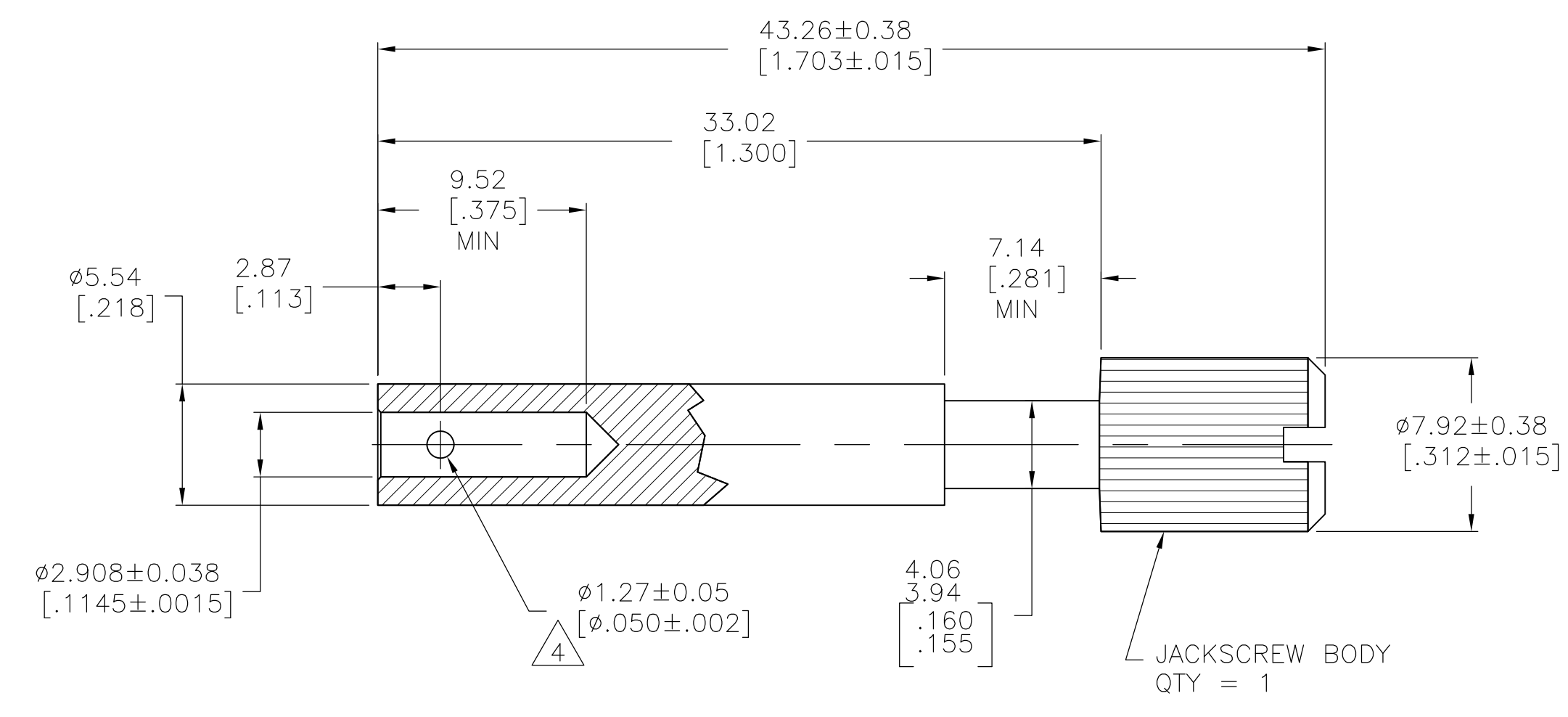
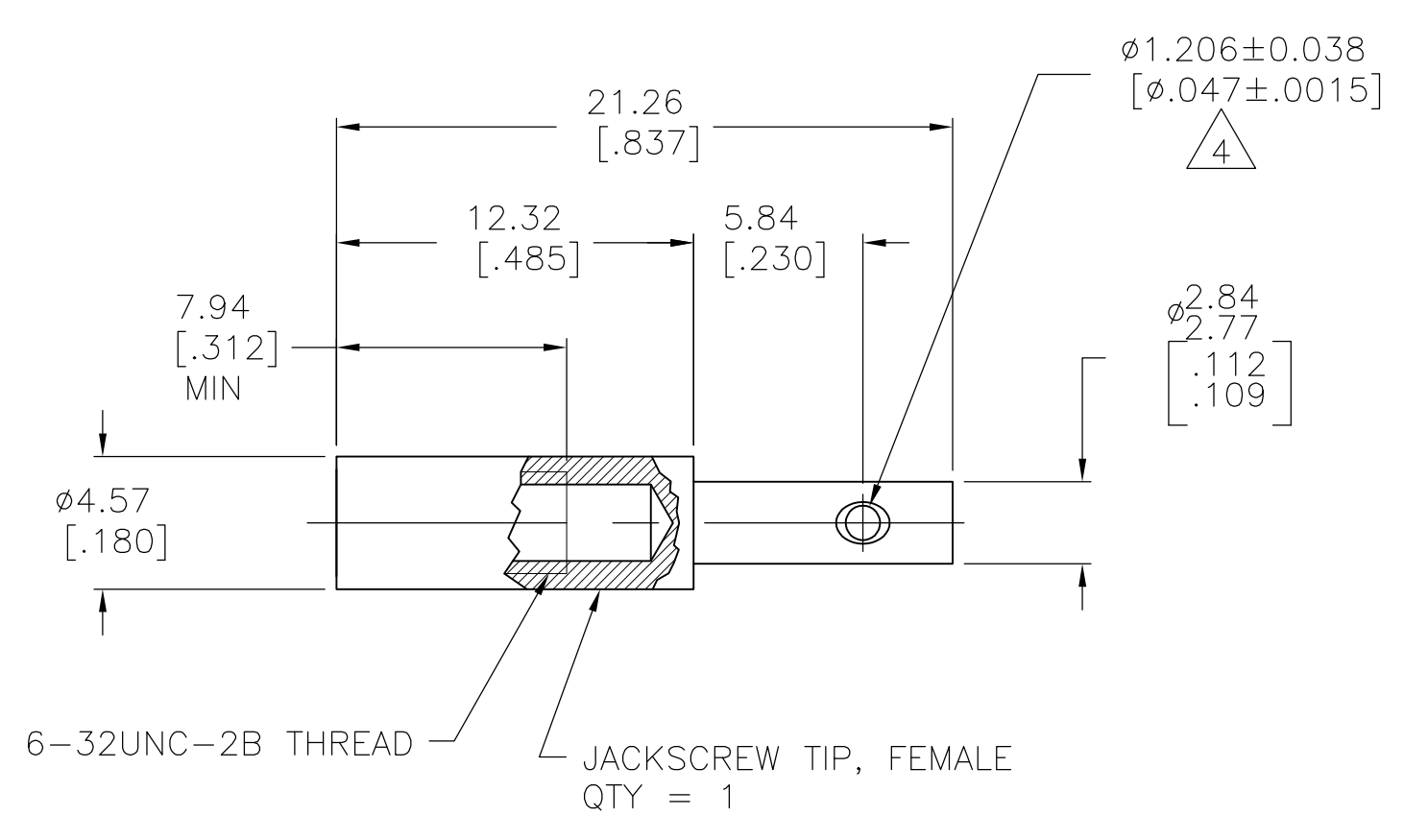


- 1 ZINC.
- 2 STAINLESS STEEL.
- 3 TO ASSEMBLE JACKSCREW REFER TO INSTRUCTION SHEET #1189.
- 4 HOLE CENTRALLY LOCATED WITHIN ± 0.07 [.003] OF THE 5.54 [.218] DIA AND THE 2.77/2.84 [.109/.112] DIA CENTER LINES.
- 5 CHROMATE CONVERSION, CLEAR.
- 6 HEXAVALENT CHROMATE COATING ON JACKSCREW BODY.
- 7 NON-HEXAVALENT CHROMATE COATING ON JACKSCREW BODY.
- 8 SPECIAL PACKAGING - ONE UNASSEMBLED UNIT PER BAG
- 9 PRELIMINARY - NOT FOR PRODUCTION.



8	7	9	201414-5
7			201414-4
6			201414-1
NOTES			PART NUMBER

THIS DRAWING IS A CONTROLLED DOCUMENT.

DIMENSIONS:	TOLERANCES UNLESS OTHERWISE SPECIFIED:	DWN	10/18/94	Tyco Electronics Corporation Harrisburg, PA 17105-3608			
mm [INCHES]	0 PLC ± - 1 PLC ± - 2 PLC ± - 3 PLC ± 0.13 [.005] 4 PLC ± - ANGLES ± -	CHK	11/07/94				
		NAME		JACKSCREW KIT, UNASSEMBLED, FEMALE, M SERIES			
MATERIAL: JACKSCREW BODY: 1 JACKSCREW TIP: 2 PIN: 3		PRODUCT SPEC					
FINISH: JACKSCREW BODY: 4 PIN: PASSIVATED		APPLICATION SPEC		SIZE	CAGE CODE	DRAWING NO	RESTRICTED TO
		WEIGHT		A1	00779	201414	
		CUSTOMER DRAWING		SCALE	4:1	SHEET	1 OF 1
				REV	L2		